

# update 01

iris colour



webnative update 01

**New features :** WebNative now incorporates many major changes. The software has been re-engineered with an interface that allows greater flexibility. We can now easily alter your site's WebNative environment, and custom-tailor the services we offer to each user. We have enhanced the production tools within WebNative, so operators can work more quickly, with even more process-automation.

Existing setups and passwords will still function exactly as before. We can easily enable any new features you require. Please contact your Account Manager for details or to change your configuration.

**Caution:** The new default WebNative setting allows password changing. Any user with access to your volume can change your password. Please contact your Account Manager if you want this feature disabled.

# 7

New WebNative features includes:

A new "Styles" architecture which allows the WebNative user interface to be easily customised. The look and feel of WebNative can now be completely customised through an assortment of JavaScripts. These JavaScripted interface options, called "Styles", allow us to change the way our users work with WebNative, everything from the site's visual appearance, to its functionality, to the language for the text that users see when accessing WebNative services, can be customised to suit the needs of each customer and each locale. And, creating these new "Styles" is easily implemented.

A QuarkXPress preview extension has been added which lets users quickly preview multi-page QuarkXPress documents from within their web browsers. These QuarkXPress document previews are generated through the new version of WebNative XT; users can see uneditable thumbnail - or full-size previews of their documents, including information about the location of each image, within its document. By clicking on any image, users can find out its size and where it resides. Another click provides a larger preview of the image and displays any information stored with the image. Further speeding the way that operators and customers can review Quark documents, the WebNative XT extension also enhances multi-site QuarkXPress production by allowing users to drag-and-drop images from their web-browsers directly into their own documents.

# 2

A new image conversion engine, capable of adapting downloadable images to formats that match the specifications set by users. WebNative's new image-ordering option allows users to specify the format, colour space, and resolution of images they've located through WebNative so that they will already be in the appropriate format for their current use, once they download them. Images can also be easily scaled, cropped, and encoded with ICC profiles for colour-corrected proofing. All of these conversions are done quickly and efficiently on the WebNative server. There are two styles for Image Ordering, one which allows comprehensive ordering (with cropping), and one that offers only a very simple re-sizing interface.

Enhanced file manipulation & annotation: A new CGI for WebNative gives users more control over file-management, allowing them to move, rename, or delete files from their WebNative volumes. Another new WebNative option allows users to upload multiple files through a single interaction. And, through fields that can be scripted, users can now also annotate their individual files with 'metadata'.

Enhanced downloading for PC clients: Users who are accessing WebNative from PCs will now get ZIP'ed files instead of Stuffit files. The files will have appropriate suffixes attached to them for use on the PC.

Enhanced functionality with archives: Archived files are now merged with normal file browsing so users can see a combination of online and offline files as they browse and search.

# 3



Custom Image Order: This icon will bring up the Custom Image Order, where you can specify the dimensions, resolution, colour space, file format type, and cropping for any image you want to download.

The Custom Image Order form allows you to specify the format and size of an image before you download it. WebNative presents a preview of the image at the top of the screen, and next to it, details about the dimensions, resolution, image type and colour space of the original.

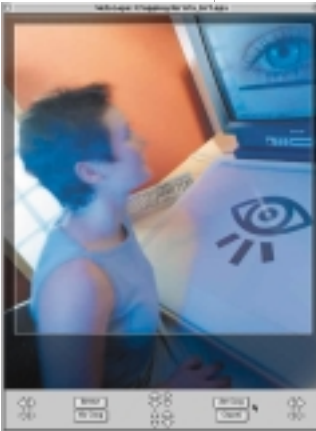


# 4



Use the type-in boxes and pop-up lists in the lower portion of the window to specify attributes for the image you are about to download. The 'width', 'height', and 'Percent of original' will remain tied to one another unless you uncheck the Preserve aspect ratio. If you remove that constraint, 'Percent of original' will remain tied to width. With some TIFF and EPS images, you may see an option that allows you to Disable clipping path. If you select this option, the clipping path will be turned off in the image you download; the path, however, will remain in the image.

**Cropping:** You may, if you would like, crop the image before downloading. Click on the Cropping button to open a larger preview of the image with controls for cropping the left and right sides and top and bottom of the image. The larger arrows move the cropping guides in bigger increments than the smaller arrows. When you've established the appropriate cropping criteria, click on the Set Crop button to return to the Custom Image Order form. Use the Revert button to return to the initial preview of the cropped image or the No Crop button to remove all cropping. The Cancel button allows you to dismiss the cropping interface without changing any cropping information for downloading.



**Downloading:** When you are satisfied with all the parameters for the image, click on the Download File button to begin the process. WebNative will download the image to the desk top of your local machine.

# 5



If you have requested the cropping and resizing of a large file it may take a few seconds for the server to perform this conversion process and begin the subsequent download.

Users can now change passwords, create folders, move, rename and delete data from their WebNative folders. Please ensure only authorised users have access to your folders if you request these new features. If in doubt **change your password immediately**.

We can disable all new features including password changing if required.

**Help:** Online help is available in every WebNative window. Step-by-step instructions guide you through all operations and telephone support is available from Iris Colour.

Telephone: +44 (0)28 9050 7900, E-mail [support@iris-colour.co.uk](mailto:support@iris-colour.co.uk)

---

iris colour

105-109 Limestone Road,  
Belfast BT15 3AB

T: 028 9050 7900

F: 028 9050 7901

I: 028 9050 7902

E: [mail@iris-colour.co.uk](mailto:mail@iris-colour.co.uk)

W: [www.iris-colour.co.uk](http://www.iris-colour.co.uk)

